

# Career Pathways to Safer Transportation Systems

**T**here is growing evidence of industry demand for road safety competencies. However, students, working professionals, and employers may have difficulty identifying a structured training curriculum or program of study. The career pathway solution is the implementation of a nationally replicable model for providing and incentivizing road safety training, education, and competency attainment.



**H**ighlights: The West Region Transportation Workforce Center at Montana State University (MSU) will implement two interrelated programs aimed at integrating safety competencies into transportation training, education, and career pathway streams. For incumbent workers, MSU will establish a road safety training curriculum and employee recognition program that can be implemented by employers and training providers nationwide.



## **T**he Road Safety Scholar Recognition Program will:

- Establish a comprehensive curriculum/training roadmap for incumbent transportation workers to obtain core road safety competencies;
- Work through existing training providers (e.g. Local Technical Assistance Programs, etc.) to offer content via in-person trainings and to adapt content to local conditions/needs;
- Identify on-line courses that meet learning objectives to offer flexibility in course delivery mode and timing;
- Develop articulation agreements with degree-granting programs;
- Provide outreach to employees and employers on available incentives for completing safety training, for example, opportunities to attain industry-recognized credentials, a degree, or career benefits such as leadership recognition or advancement.



**F**or pre-career students, MSU will additionally serve as an intermediary between road safety organizations and college and university programs to foster enhanced problem and project-based student learning opportunities to expose multidisciplinary pre-career students to road safety issues and professions.



## Transportation & University Partnerships for Engaged Scholarship Program will:

- Provide an adaptable model for integrating road safety awareness and project-based learning experiences into existing multidisciplinary degree program coursework;
- Provide resources and networking opportunities to universities and transportation organizations to foster new collaborations;
- Establish long-term industry-university partnerships to provide continuous engaged scholarship, research, and experiential learning opportunities to pre-career students in safety.

## Outcomes

- Increased student awareness, interest, knowledge, and technical skills related to transportation safety issues, solutions, and careers.
- Number of prospective hires and incumbent staff possessing road safety competencies will increase.
- Participants will develop core safety competencies and additional professional credentials and/or career benefits through program participation.



### Partners:



National Center  
for  
Rural Road  
Safety

Montana  
**LTAP**

### Deployment Phases:

1

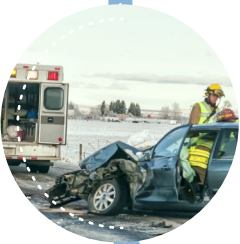
- Safety Scholar curriculum development
- Assessment & participant tracking tool development
- Industry & university outreach

2

- Pilot deployment of training program (MT LTAP)
- Pilot deployment of university engaged scholarship program

3

- Pilot program assessment
- National dissemination of training curriculum (NACE)
- University/Agency Partnership playbook



The **Safety Career Pathways** project is part of the National Transportation Career Pathways Initiative, a national consortium supported by the Federal Highway Administration to develop career pathways for critical occupations in nationally significant transportation discipline areas.

For more information on the project, visit: [wrtwc.org](http://wrtwc.org)



**MONTANA**  
STATE UNIVERSITY

Western  
Transportation  
Institute



WEST REGION  
**Transportation**  
Workforce Center



U.S. Department of Transportation  
**Federal Highway**  
Administration